



AUSTIN AVENUE BRIDGES PROJECT
GEORGETOWN, TEXAS

AESTHETICS
BRIDGE TYPES - FOR VISUALIZATION ONLY





EXISTING CONDITION



EXISTING CONDITION



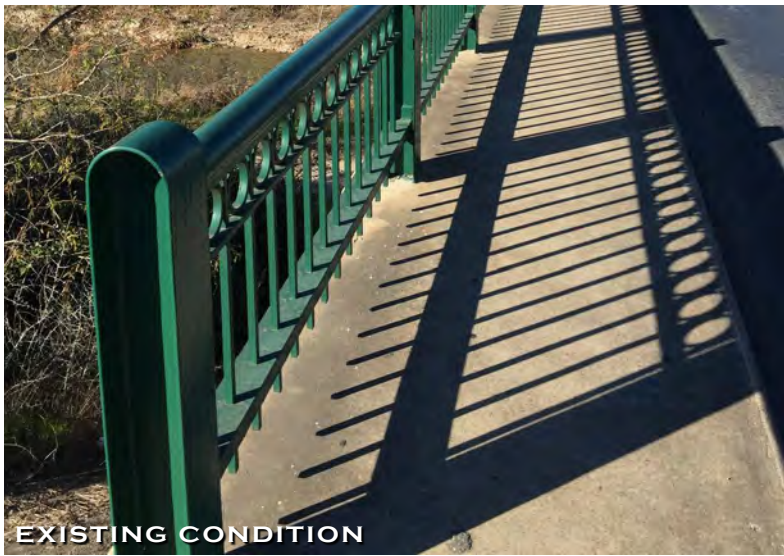
EXISTING CONDITION



AUSTIN AVENUE BRIDGES PROJECT GEORGETOWN, TEXAS

AESTHETICS
LIGHTING & FURNISHINGS - FOR VISUALIZATION ONLY





EXISTING CONDITION



AUSTIN AVENUE BRIDGES PROJECT GEORGETOWN, TEXAS

AESTHETICS
RAILINGS - FOR VISUALIZATION ONLY





EXISTING CONDITION



EXISTING CONDITION



AUSTIN AVENUE BRIDGES PROJECT
GEORGETOWN, TEXAS

AESTHETICS
STREETSCAPE - FOR VISUALIZATION ONLY





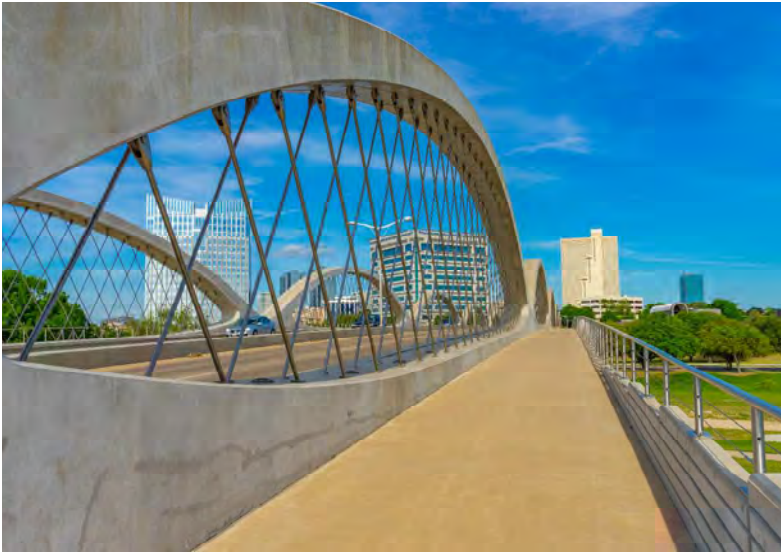
AUSTIN AVENUE BRIDGES PROJECT
GEORGETOWN, TEXAS

SAFETY AND CONNECTIVITY
PEDESTRIAN BRIDGES - FOR VISUALIZATION ONLY





EXISTING CONDITION



AUSTIN AVENUE BRIDGES PROJECT
GEORGETOWN, TEXAS

SAFETY AND CONNECTIVITY
PEDESTRIAN SAFETY - FOR VISUALIZATION ONLY





EXISTING CONDITION



EXISTING CONDITION



EXISTING CONDITION

*PHOTO BY: JEFF YOUNGSTROM - CHINATOWN, PORTLAND, OREGON
[HTTPS://CREATIVECOMMONS.ORG/LICENSES/BY-NC/2.0/LEGALCODE](https://creativecommons.org/licenses/by-nc/2.0/legalcode)



AUSTIN AVENUE BRIDGES PROJECT GEORGETOWN, TEXAS

SAFETY AND CONNECTIVITY
TRAILS - FOR VISUALIZATION ONLY

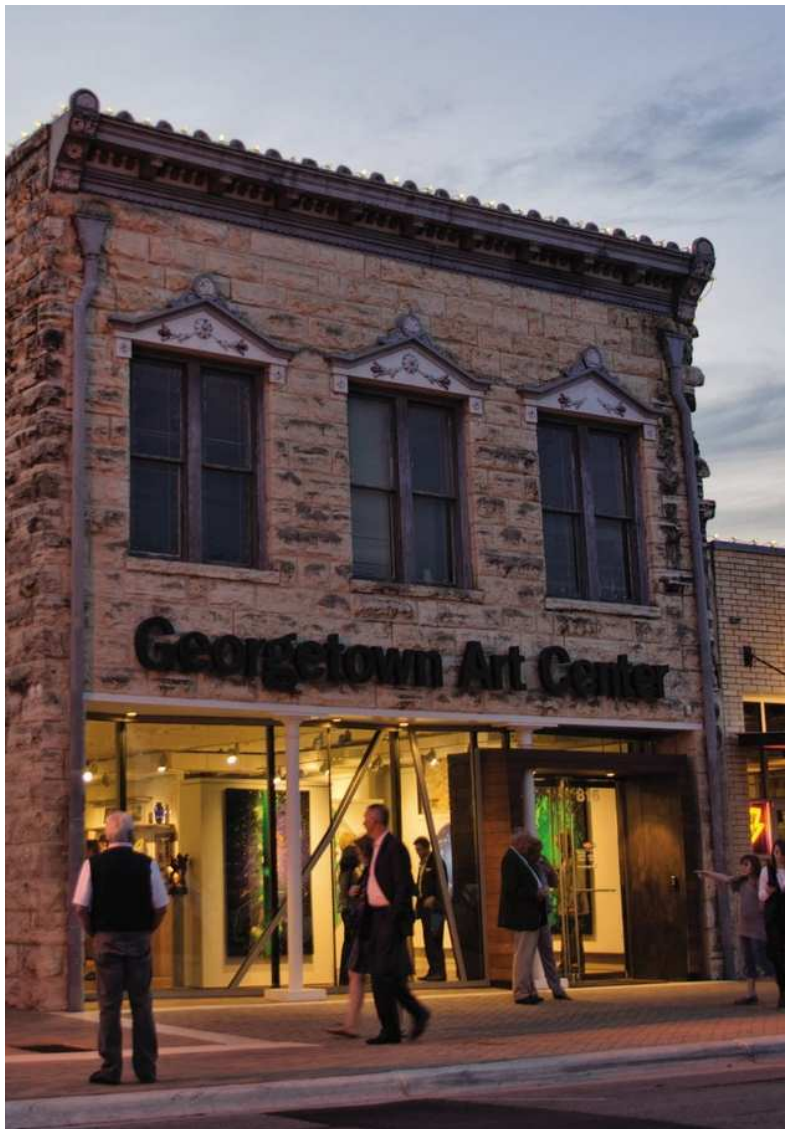




AUSTIN AVENUE BRIDGES PROJECT
GEORGETOWN, TEXAS

CHARACTER
FOR VISUALIZATION ONLY





AUSTIN AVENUE BRIDGES PROJECT GEORGETOWN, TEXAS

CHARACTER
FOR VISUALIZATION ONLY



Appendix C

Facilitator Guide



Austin Avenue Bridges Project



PUBLIC WORKSHOP

FACILITATORS GUIDE

June 29, 2016

Exhibits and Items for each Small Group Table

1. Aerial Exhibit – (1) 30x42 Board per Table
2. Group Facilitator Guide – 1 per Table
3. Group Handout / Public Meeting # 1 Results – 15 per Table
4. Photos Exhibit Packet – 5 per Table
5. Scissors and tape to mount desired picture boards
6. Sharpies, dry erase markers, variety of colored stickers
7. Downtown Master Plan – 1 per table
8. Austin Ave. Public Meeting Report – 1 per table
9. Laptop or Tablet with Street view access – 1 per Table
10. Large post it for scribes with easels – 1 per table

Each group with need participants for the following:

1. (1) Facilitator (Consultant Team Member)
2. (1) Spokesperson (Not the Facilitator)
3. (1) Scribe (Not the Facilitator)
4. (10) Participants per Table

The group will be encouraged to document their conversation and vision for the project, by any combination of the following:

1. Use dry erase marker to draw on map
2. Use color stickers placed on map to highlight areas of concern, interest or opportunity
3. Use cut out photos placed on map to represent examples of treatments or ideas of interest or opportunity
4. Have scribe document the conversation in notes to accompany the map activity
5. Let group know that one person will be asked to present ideas or concepts or opportunities identified in the activity to the overall workshop at the end
6. At the end each group will be asked to present/describe one idea from one of the three overall topics of Safety & Connectivity, Character and Aesthetics with the workshop groups

Safety & Connectivity

Overview

- Provide overview of responses regarding safety
- Identify on aerial map the areas with safety or connectivity concerns – potentially provide stickers or laminate boards and dry erase markers (**Red Stickers for Safety Concern**, **Green Sticker for Connectivity**)

Questions

- Can you identify on the map where you think there are safety concerns and define the concern?
- Where would you like to see connections happen from the trails to Austin Avenue?
- Do you have any preferences for safety resolutions? I.E. turn lanes, signals, pedestrian barriers, street crossings (review images of examples for pedestrian separation, barriers, pedestrian bridges, etc.)



Austin Avenue Bridges Project



Character & Aesthetics

Review survey results on characteristics and aesthetic treatments

Overview

- Whether the existing bridges are repaired or replaced, what aesthetic opportunities exist to enhance the physical appearance?
- Review survey results on character and aesthetics
- [Blue Stickers for areas of aesthetic enhancement](#)

Questions

- What elements of the City do you believe define the character or identity of Georgetown?
- How do you think those characteristics could be incorporated into Austin Avenue improvements?
- If the bridges were to be repaired or replaced, what styles of bridge designs would you like to see? (Review images of different bridge types)
- Do you have a preference on the styles?
- What type of bridge rail treatment would you like to see explored? (show images of railing examples)
- Do you think the bridges should act as a gateway into downtown and incorporate iconic elements? (show examples of iconic bridges with special lighting, design elements, etc.)
- Would you like to see public artwork incorporated along Austin Avenue? If so, can you identify where you think it would be appropriate? (Show example images of public art)
- What other elements would you like to see incorporated into the design of the bridges?

Appendix D

Walking Tour Guide

AUSTIN AVENUE BRIDGES PROJECT – WALKING TOUR

Agenda

- Overview
- Components
- Structurally Deficient
- Functionally Obsolete / Safety
- Questions and Answers

Event	Start	End
Event	Start	End
Load Passengers	4:45	5:00
Depart SGEC/Arrive Blue Hole	5:00	5:05
Station 1 – Overview, Components, Struct Def	5:05	5:20
Walk	5:20	5:25
Station 2 – Struct Def, Safety, Q&A	5:25	5:35
Walk	5:35	5:40
Return to Community Center	5:40	5:45



AUSTIN AVENUE BRIDGES PROJECT
GEORGETOWN, TEXAS



AUSTIN AVENUE BRIDGES PROJECT – WALKING TOUR

Overview

- 1940** Construction of bridges is completed, Cantilevered-suspended span configuration, advantage of configuration was that it enabled bridge to have significantly longer span and thinner deck, reducing the number of supports needed
- 1999** Bridges determined eligible for listing in National Register of Historic Places
- 2000** TxDOT presented design for bridge replacement: City Council declined replacement
- 2007** Maintenance responsibility passed from TxDOT to the City of Georgetown
- 2013** TxDOT issues a load restriction per standard Bridge Inventory, Inspection and Appraisal Program (BRINSAP)
- 2014** Fallen debris found under the south bridge; City initiates condition assessment and life-cycle analysis
- 2015** TxDOT confirms need for load restriction per standard BRINSAP evaluations
- BRINSAP** Bridge Inventory Inspection and Appraisal Program – conducted every 1-2 years depending on a structure's age and condition



Texas. Department of Transportation. [South San Gabriel River Bridge on U.S. Highway 81], Photograph, July 9, 1940; (<http://texashistory.unt.edu/ark:/67531/metaph167288/>; accessed March 16, 2016).



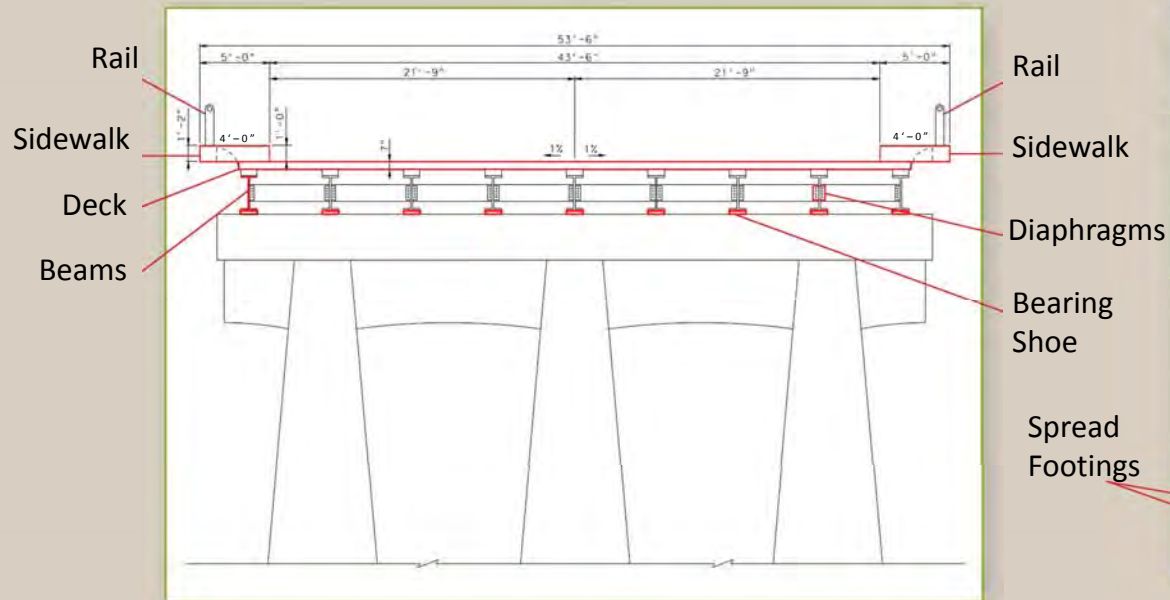
AUSTIN AVENUE BRIDGES PROJECT
GEORGETOWN, TEXAS



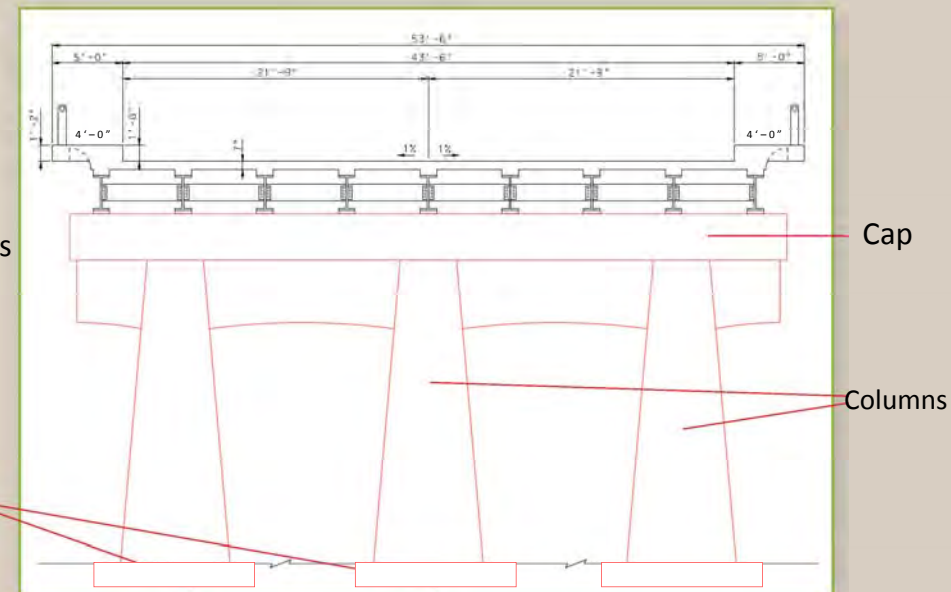
AUSTIN AVENUE BRIDGES PROJECT – WALKING TOUR

COMPONENTS

SUPERSTRUCTURE (TOP PORTION OF BRIDGE)



SUBSTRUCTURE (SUPPORTING STRUCTURE)



- Bents, Abutments, and Header Slopes



AUSTIN AVENUE BRIDGES PROJECT
GEORGETOWN, TEXAS



AUSTIN AVENUE BRIDGES PROJECT – WALKING TOUR

Structurally Deficient

- Bridge is 76 years old and typical design life is 75 years
- Bearings (what the beams sit on) have deteriorated.
 - The bearings are “locked up” and do not currently allow the bridge to “breathe” (expand, contract), causing spalling at joints
- Steel beams have corroded/rusted over time due to exposure to water coming through the deck joints. Top of beams under deck
- Based on inspections, Load restricted to 48,000 lbs (garbage trucks, 18 wheelers),
 - No enforcement and heavy loads accelerate deterioration but do not pose imminent danger
- Maintenance to date includes: hardware cloth wraps, remediate lead and repaint, oak bearing blocks (6m), joint patches and curb repairs (above)



AUSTIN AVENUE BRIDGES PROJECT – WALKING TOUR

Functionally Obsolete / Safety

- Roadway classified as a Principal Arterial with an AADT of 13-19k
- Current lane width is 11', desirable is 12'
- Sidewalk width 4' min, 6' desirable, 5' min for wheel chair w/companion or 2 side by side, 8-10' for shared used (bike/ped)
- Lacking a 2' minimum offset from the edge of travel way to pedestrian elements (consider traffic above and a 2015 growth rate of 6.8%)
- City has covered sidewalk joints - No opening pass 0.5" dia (walkers, crutches, etc), perp to travel
- Curb and joint fragments create a hazard to vehicles and pedestrians
- Railing is not to current ADA or crash standards
- Today's needs are not met - no reliable trail connections to N and S San Gabriel



AUSTIN AVENUE BRIDGES PROJECT
GEORGETOWN, TEXAS



Questions



AUSTIN AVENUE BRIDGES PROJECT
GEORGETOWN, TEXAS



SHARE YOUR INPUT ON THE AUSTIN AVENUE BRIDGES

Share Input on the Project

Take a survey here or access it from home via the project website: <http://AustinAve.Georgetown.org>

Share the survey link with those that might be interested.

Share general comments on a comment card or send them to us via email at: AustinAve@georgetown.org

Leave your comments on the project maps.

Share your Photos and Stories!

Do you have any photos or stories of the Austin Avenue Bridges? We would like to catalog these as a part of this project!

Send your photos to the team or use these hashtags to submit on social media:

[#georgetowntxbridges](#)

[#austinavebridges](#)

[#austinavegeorgetown](#)

[#georgetowntx](#)



"Bridges for Williamson Built Recently," Williamson County Sun, February 16, 1940. Accessed March 7, 2016. www.newspaperarchive.com



AUSTIN AVENUE BRIDGES PROJECT
GEORGETOWN, TEXAS

