

Appendix B

Public Workshop Handouts & Photo Examples



Austin Avenue Bridges Project



PUBLIC WORKSHOP HANDOUT

June 29, 2016

Safety & Connectivity

Highlights of Public Input Considering Safety

- Safety needs to be a top concern and first priority
- Need to consider both vehicular turning traffic and pedestrian traffic

Highlights of Public Input on Bicycle and Pedestrian Trail Components

- Interest in enhancing bicycle and pedestrian facilities
- Need to widen sidewalks and provide separation or barriers between sidewalks and the roadway
- Need to provide separate bicycle and pedestrian facilities and a separate bridge

Highlights of Public Input on Travel Lanes

- Preference to not reduce lane widths
- Provide 5 lanes with a center turn lane
- Make Austin Ave. a 3-lane road with center turn lane and bicycle lanes
- Preference to not add a turn lane and concern for the additional traffic that it would bring to San Gabriel Village
- Turn signals needed at San Gabriel Village Blvd.

Highlights from the Georgetown Master Plan

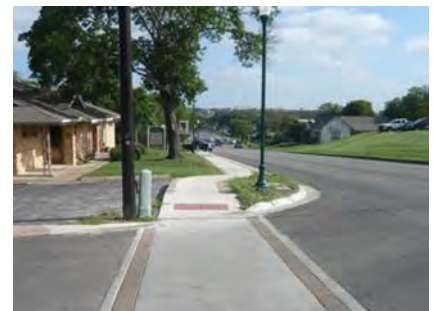
- Directional signs and wayfinding devices tailored to the pedestrian
- Extend sidewalks along Austin Ave. north to the river
- Provide clearly defined paths between the river and downtown
- Install markers as important parts of these regional trail connectors
- Study the feasibility of providing pedestrian connections across both the rivers, that are separate from those used by automobiles
- Study the feasibility of adding a cantilevered sidewalk with a look-out area to the historic bridge over the South San Gabriel River with a grand staircase and accessible ramp to the existing trail
- Study the feasibility of installing a pedestrian bridge across the river to link downtown with development to the west
- Bike routes should be clearly defined and implemented to provide continuity of access from outlying areas to downtown
- Sidewalks leading up to bridges are Level 3. Key features include: Scored concrete in 2-foot modules, decorative lights, benches and waste receptacles, and a 6' width is preferred in Level 3.



Sidewalks leading to the bridges are currently Level 3



Type C intersections include a striped crosswalk



Type B intersections include a band of pavers with scored concrete crossings



Austin Avenue Bridges Project



Character & Aesthetics

Highlights of Public Input on Character & Aesthetics

- Preference to maintain river views
- Preference to preserve historical appeal and small town charm
- Desire for the bridge to be historic landmark
- Desire to enhance gateway to Georgetown
- Questions about archeological sites
- Desire to utilize modern technology and design
- Desire to incorporate artistic elements



Landscaped gateways should serve as “previews” of downtown and include a similar landscape palette

Highlights from the Georgetown Master Plan



The terrace and/or park on the river could include a small riverside amphitheater or performance area



A pocket park and plaza along Austin Avenue could help activate this area



A “look-out” area could be incorporated into a new sidewalk over the South San Gabriel River



Lighting Strategy #1 - historic lights with banner



Lighting Strategy #1 - historic lights without banner



Art parks are sites where artists are commissioned to develop an entire site as an art installation



Contemporary sculptures have added to the downtown streetscape and should be continued



AUSTIN AVENUE BRIDGES PROJECT GEORGETOWN, TEXAS

AESTHETICS
ART - FOR VISUALIZATION ONLY





AUSTIN AVENUE BRIDGES PROJECT
GEORGETOWN, TEXAS

AESTHETICS
BRIDGE TYPES - FOR VISUALIZATION ONLY





EXISTING CONDITION



EXISTING CONDITION



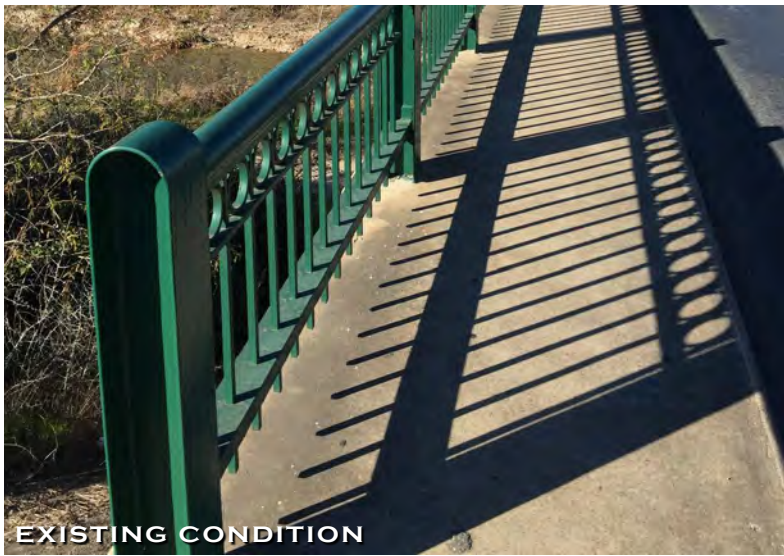
EXISTING CONDITION



AUSTIN AVENUE BRIDGES PROJECT GEORGETOWN, TEXAS

AESTHETICS
LIGHTING & FURNISHINGS - FOR VISUALIZATION ONLY





EXISTING CONDITION



AUSTIN AVENUE BRIDGES PROJECT GEORGETOWN, TEXAS

AESTHETICS
RAILINGS - FOR VISUALIZATION ONLY





EXISTING CONDITION



EXISTING CONDITION



AUSTIN AVENUE BRIDGES PROJECT GEORGETOWN, TEXAS

AESTHETICS
STREETSCAPE - FOR VISUALIZATION ONLY





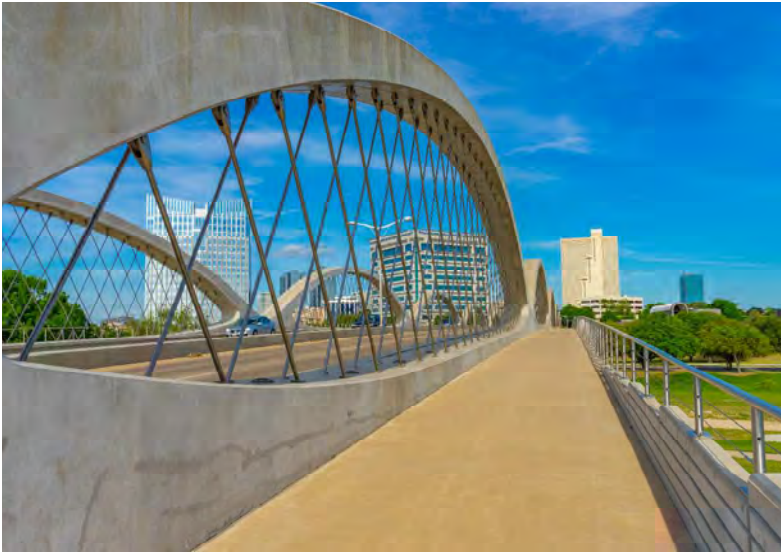
AUSTIN AVENUE BRIDGES PROJECT GEORGETOWN, TEXAS

SAFETY AND CONNECTIVITY
PEDESTRIAN BRIDGES - FOR VISUALIZATION ONLY





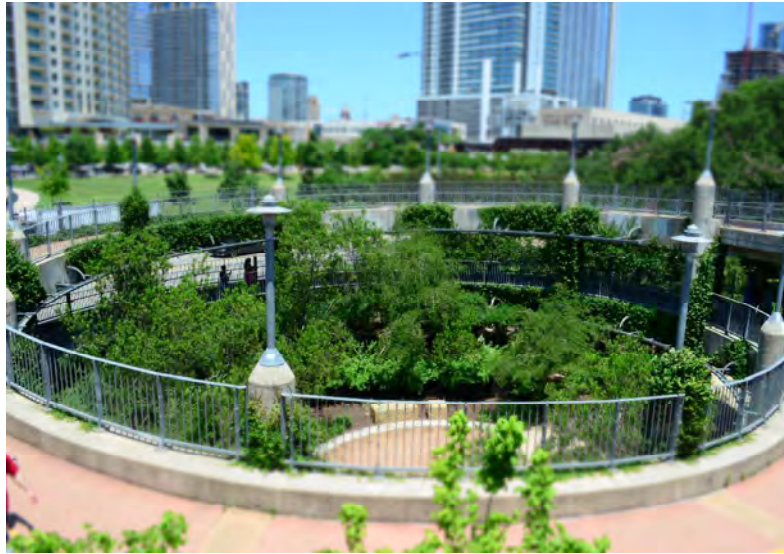
EXISTING CONDITION



AUSTIN AVENUE BRIDGES PROJECT
GEORGETOWN, TEXAS

SAFETY AND CONNECTIVITY
PEDESTRIAN SAFETY - FOR VISUALIZATION ONLY





EXISTING CONDITION



EXISTING CONDITION



EXISTING CONDITION

*PHOTO BY: JEFF YOUNGSTROM - CHINATOWN, PORTLAND, OREGON
[HTTPS://CREATIVECOMMONS.ORG/LICENSES/BY-NC/2.0/LEGALCODE](https://creativecommons.org/licenses/by-nc/2.0/legalcode)



AUSTIN AVENUE BRIDGES PROJECT GEORGETOWN, TEXAS

SAFETY AND CONNECTIVITY
TRAILS - FOR VISUALIZATION ONLY

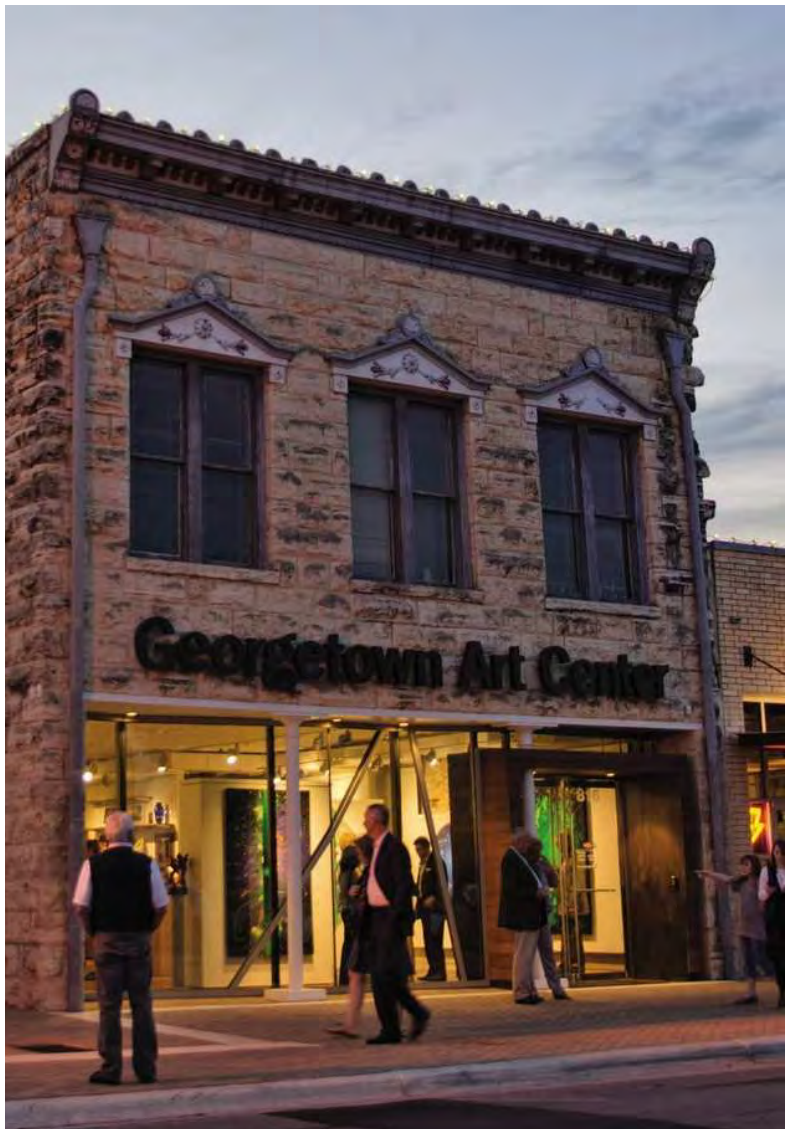




AUSTIN AVENUE BRIDGES PROJECT GEORGETOWN, TEXAS

CHARACTER
FOR VISUALIZATION ONLY





AUSTIN AVENUE BRIDGES PROJECT GEORGETOWN, TEXAS

CHARACTER
FOR VISUALIZATION ONLY

