

Welcome

Memorial Drive & Wolf Ranch Parkway Improvements Open House Tuesday, Jan. 16, 2024, **Time**

Georgetown City hall
808 Martin Luther King Jr. Street

Virtual Open House
Jan. 16, 2024

Welcome to the virtual open house for the Wolf Ranch Parkway Improvements project in Georgetown, Texas. We appreciate you taking the time to view this information and welcome your comments is noted at the end of this presentation.

Project Overview



The City of is proposing a two-phase project to improve traffic flow, safety, and access along Memorial and Wolf Ranch Parkway from SH 29 to Rivery Blvd.

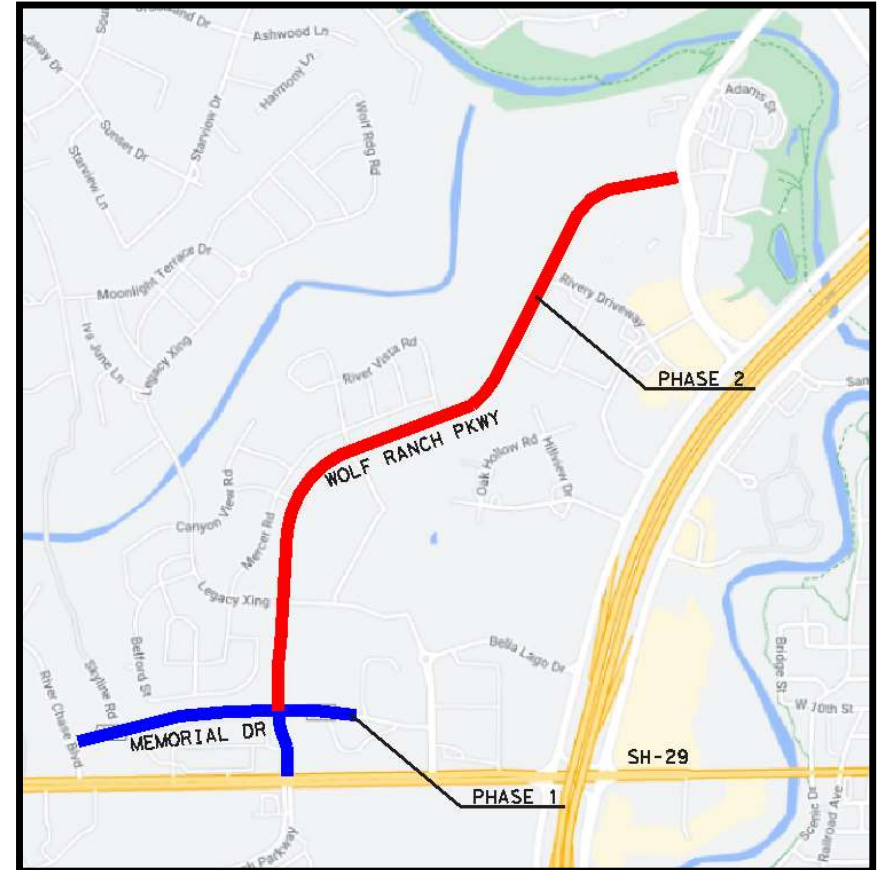
Phase I: Widen Memorial Drive to match recently widened section at eastern end, and construct intersection/access modifications between Wolf Ranch Parkway and SH 29

Phase II: Widen Wolf Ranch Parkway to a four-lane divided roadway to improve capacity, signalize intersections, provide turn lanes, provide pedestrian/bicycle facilities, and improve safety.

Project Funding

Phase I has been fully funded by City of Georgetown.

Phase II design is funded by the City and is actively pursuing construction funding opportunities from local, state, and federal sources.



Project Goals



Project Goals:

- Upgrade roadways to current design and safety standards
- Address increased traffic volumes by adding capacity
- Enhance safety and connectivity for drivers, pedestrians, and bicyclists
- Proactively plan for current and future development
- Upgrade storm drainage and utilities

Memorial Drive and Wolf Ranch Parkway Intersection Improvements

3 Alternatives Considered:

- Partial Median U-Turn (MUT)
- Signalized
- Roundabout

Intersection Improvement Options

Option 1 - Partial MUT



- Partial Median U-Turn (MUT) Intersection

Pros:

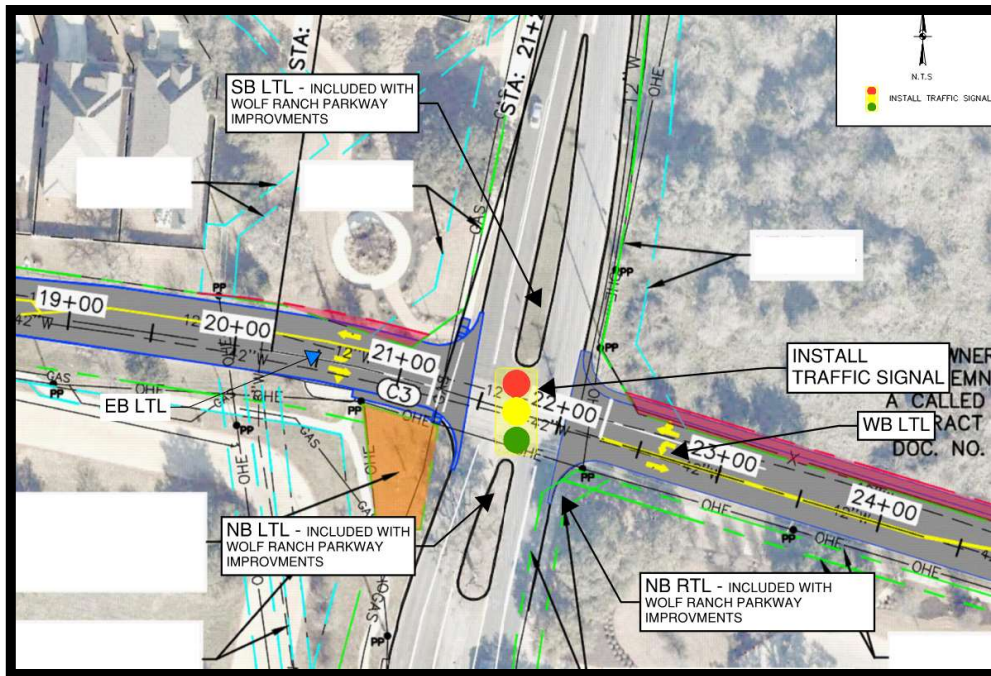
- Cheapest option
- Less Right-of-Way
- No impact to Wolf Ranch Parkway through traffic

Cons:

- Eliminates NB/SB left-turn movements at the intersection
- Eliminates EB/WB through movements at the intersection
- Removes left-turn access at Academy, CVS, and school driveways
- No impact to Wolf Ranch Parkway through traffic

Intersection Improvement Options

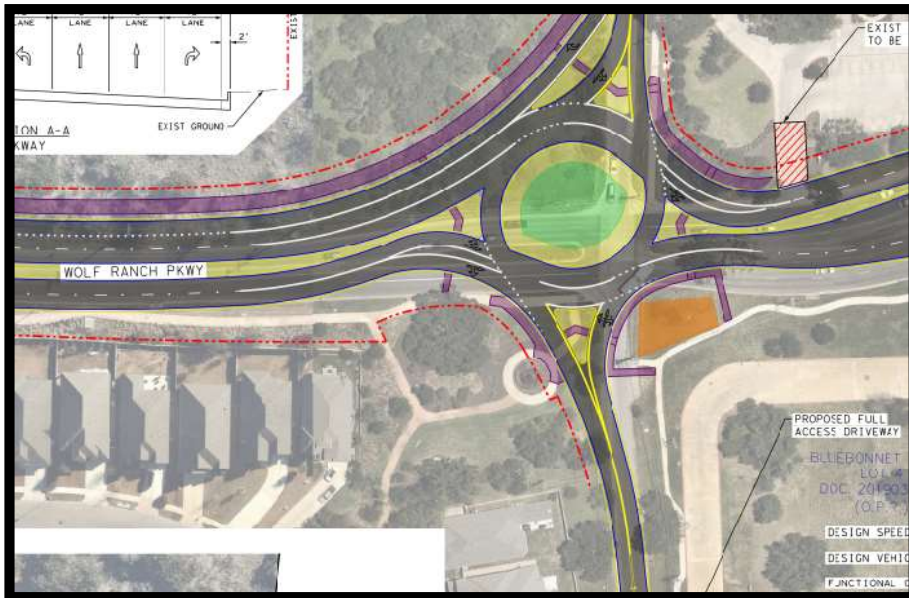
Option 2 - Traffic Signal



- Traffic Signal

- Pros:
 - Full access to all business driveways
 - All intersection movements have full access
 - Familiar to drivers
- Cons:
 - Must be timed perfectly with the SH 29 signal to prevent gridlocking
 - High cost due to the signal and NB and SB Left-Turn lanes are needed
 - If a NB Right-Turn lane was added, the intersection would not meet signal warrants (ie, close to the threshold of not meeting warrants)

Option 3 - Roundabout

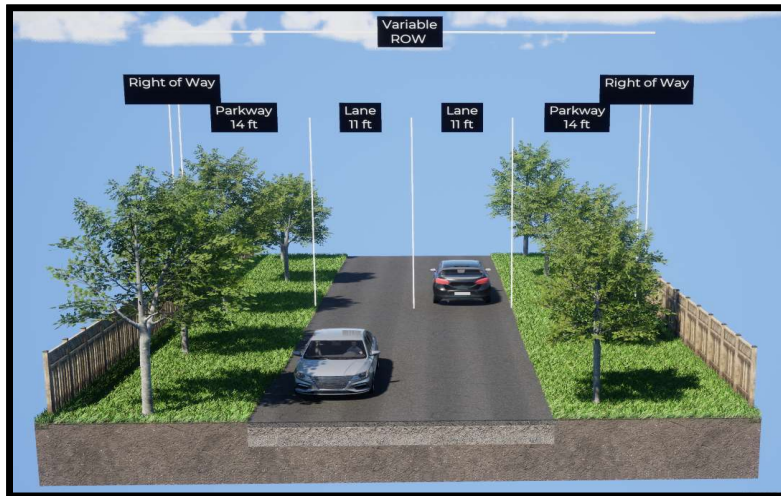


- Roundabout
 - Pros:
 - Full access to all business driveways
 - All intersection movements have full access
 - Cheaper than a traffic signal
 - Cons:
 - Largest Right-of-Way requirements
 - Closer to SH 29 signal than desired
 - Geometric constraints (cemetery)
- This option provides the best traffic and safety improvements, meets the City's funding capacity, and allows for the best access to businesses.

Improvements Memorial Drive (Phase I)

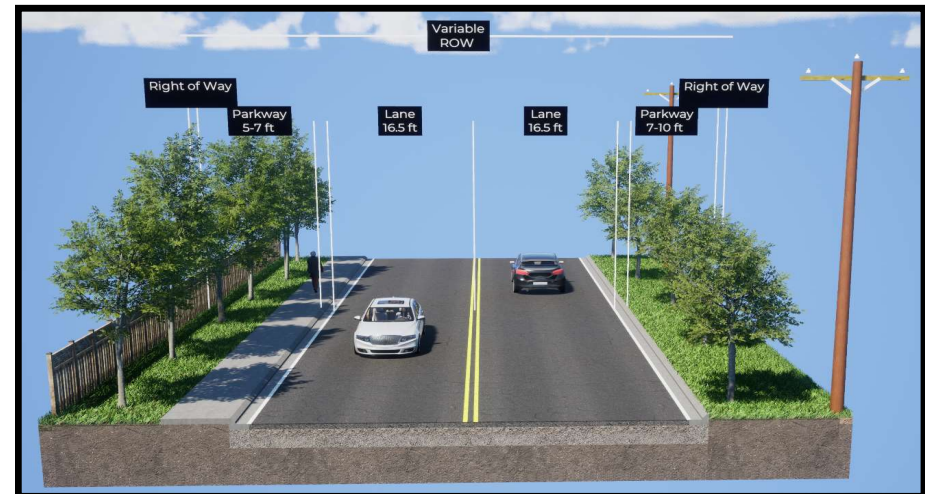
Existing Conditions:

- Two 11-foot lanes with no shoulders
- Missing sidewalks
- Open ditch drainage



Proposed Improvements:

- Widen lanes to 16.5'
- Construct 5' sidewalk
- Construct a closed storm drain with curbs and gutters
- Install/upgrade intersections with signals and ADA ramps
- Install roundabout at Memorial/Wolf Ranch intersection



Interim Roundabout (Phase I)

- Dual lefts added on Southbound Wolf Ranch at SH 29
- Hybrid ½ lane roundabout
- Offset alignment to avoid cemetery
- ROW acquisition for ultimate footprint
- Ties to exist Wolf Ranch 3-lane section
- No left turns allowed at driveways between Memorial + SH 29



Improvements Wolf Ranch Pkwy (Phase II)

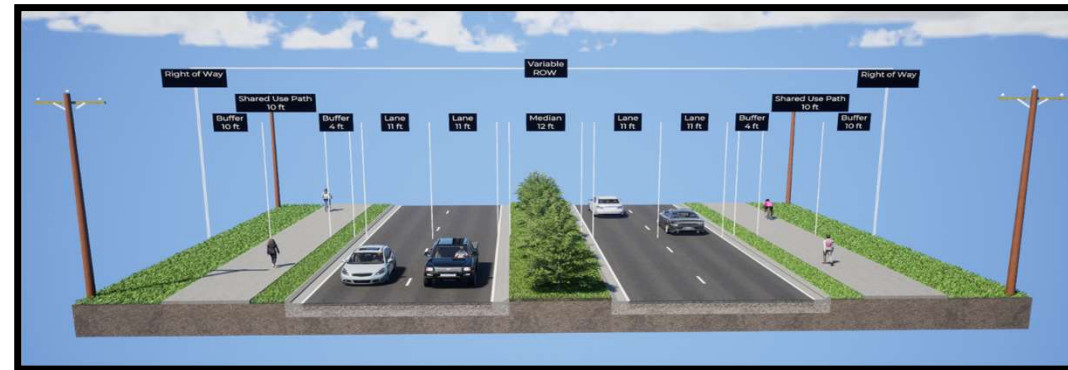
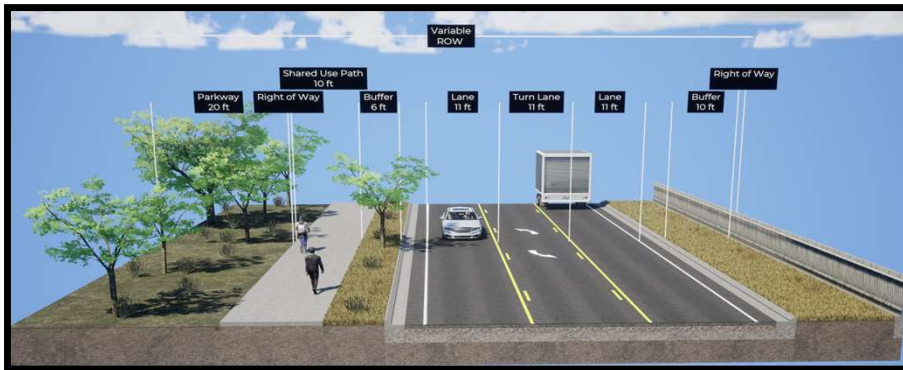


Existing Conditions:

- Two 12-foot lanes with shoulders that vary in width from 2 to 8 feet wide.
- Incomplete or missing sidewalks

Proposed Improvements:

- Construct an additional lane in each direction
- Construct raised median & dedicated left and right-turn lanes
- Construct a shared-use path for pedestrians and bicyclists
- Upgrade storm drain with curbs and gutters
- Install/upgrade intersections with signals and ADA ramps
- Install roundabout at Memorial/Wolf Ranch intersection



Ultimate Roundabout



- Ties to ultimate Wolf Ranch 5-lane section
- Right turn side-lane added from Westbound Memorial to Northbound Wolf Ranch



Project Development



Project Development Process



Preliminary design is anticipated to be complete in 2024. Final design and construction schedules are dependent upon funding availability.

Environmental Considerations



Environmental review is underway to ensure the project meets City, County, and Federal regulation, including Endangered Species Assessments and preparation of WilCo Regional habitat Conservation plan and expected to be completed in 2024.

